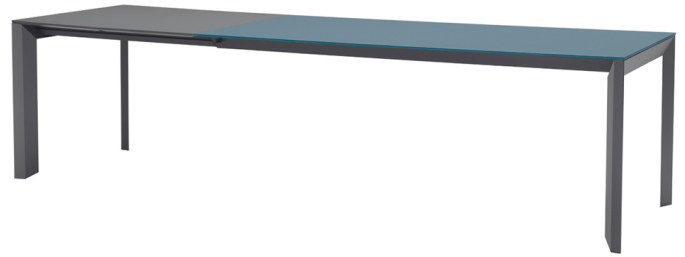




# Apollo Extendable Table

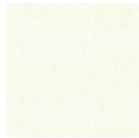
design Midj R&D, 2014

Extendable table with sliding base in painted steel. Top in melamine, wood, glass or ceramic.



## Colors and Materials

### Structure



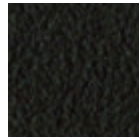
White Steel



Black Steel



Sand Steel

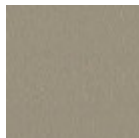


Brown Steel



Grafite Steel

### Coating



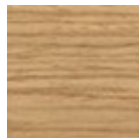
Melamine

8 Colors



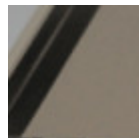
Laquered MDF

5 Colors

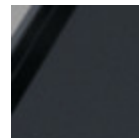


Lacquered veneered wood

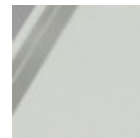
9 Colors



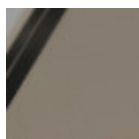
Matt Sand Antiscratch Glass



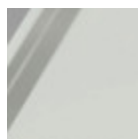
Matt Graphite Antiscratch Glass



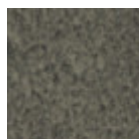
Extra Clear Matt White Antiscratch Glass



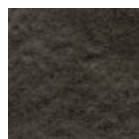
Glossy Sand Glass



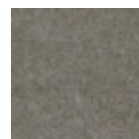
Extraclear Glossy White Glass



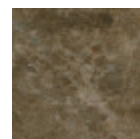
Lead Crystalceramic



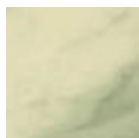
Charcoal Savoia Crystalceramic



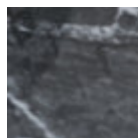
Cement Savoia Crystalceramic



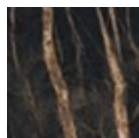
Emperador Marble Crystalceramic



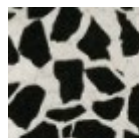
Crystalceramic with effect calacatta marble



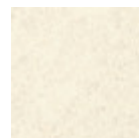
Crystalceramic Glossy Black Greek Marble



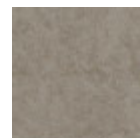
Crystalceramic with effect noir desir marble



Venetian crystalceramic



Oxide White Crystalceramic



Oxide Sand Crystalceramic



**Corten  
Crystalceramic**

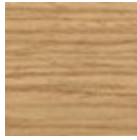
## Extensions



**Melamine**  
8 Colors



**Laquered MDF**  
5 Colors



**Lacquered veneered  
wood**  
9 Colors

## Dimensions

Dimensions

## Volumetric Details

**Weight** 107 Kg

**Volume** 0.4 mc

**Package** 4

Image not found or type unknown

	<b>A</b>	<b>B</b>	<b>C</b>	<b>D</b>
	<b>(cm)</b>	<b>(cm)</b>	<b>(cm)</b>	<b>(cm)</b>
	(inch)	(inch)	(inch)	(inch)
<b>140/190x90</b>	75	140	90	190
<b>(cm)</b>	29.5	55.1	35.4	74.8
(inch)				
<b>160/210/260x90</b>	75	160	90	260
<b>(cm)</b>	29.5	63	35.4	102.4
(inch)				
<b>190/240/290x90</b>	75	190	90	290
<b>(cm)</b>	29.5	74.8	35.4	114.2
(inch)				

## Downloads

[Apollo 140x90 open 3D \(zip\)](https://www.midj.com/images/uploads/resources/APOLLO_1400x900_a.zip) - [https://www.midj.com/images/uploads/resources/APOLLO\\_1400x900\\_a.zip](https://www.midj.com/images/uploads/resources/APOLLO_1400x900_a.zip)

[Apollo 140x90 closed 3D \(zip\)](https://www.midj.com/images/uploads/resources/APOLLO_1400x900_c.zip) - [https://www.midj.com/images/uploads/resources/APOLLO\\_1400x900\\_c.zip](https://www.midj.com/images/uploads/resources/APOLLO_1400x900_c.zip)

## Materials Certifications

### Lacquered veneered wood

#### FEATURES AND PLUS

The veneered tops are the result of a process of bonding of thin wooden sheets, obtained by the horizontal rotary cut of the trunks applied to various types of supports to produce furniture elements, which look similar to solid wood but with better performance in terms of resistance to woodworms, lightness and more stability over time.

#### MAINTENANCE

For the regular cleaning schedule of stained veneered tops, use a damp cloth with mild soap diluted in water or specific products. Dry with a cloth or absorbent paper. Do not use abrasive products. . In case of accidental release of liquid substances, dab immediately the surface with absorbent paper or a dry, clean cloth. Avoid proximity to heat sources. Expose the veneered wood surfaces to light, for example by opening periodically the extensions of the tables that are placed inside the structures, or by moving any

objects such as vases and accessories generally resting on the top.